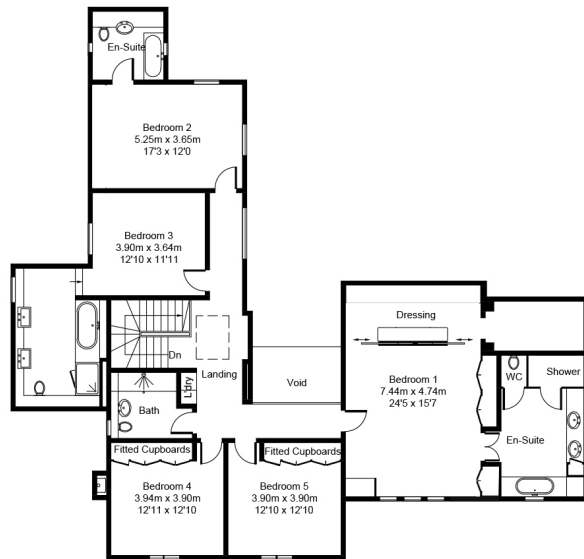
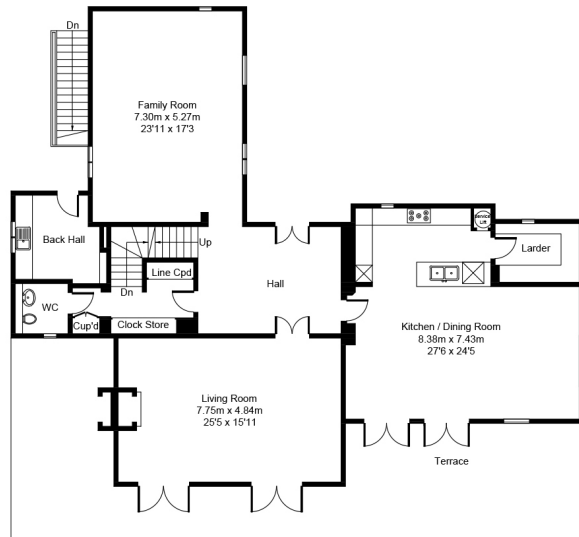


TREVERRA

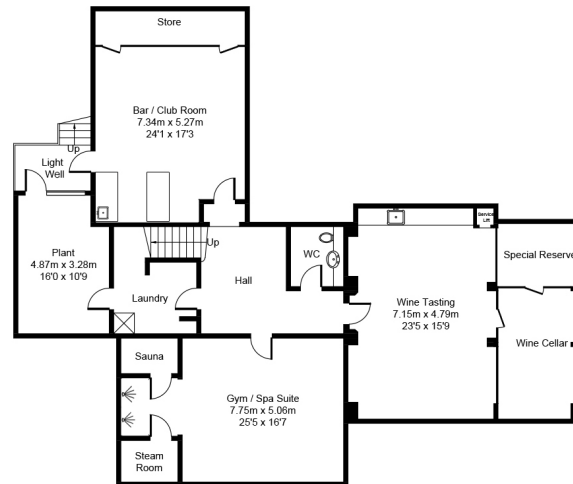
Approximate Gross Internal Area = 709.6 sq m / 7638 sq ft
(Including Garage / Basement / Excluding Void)



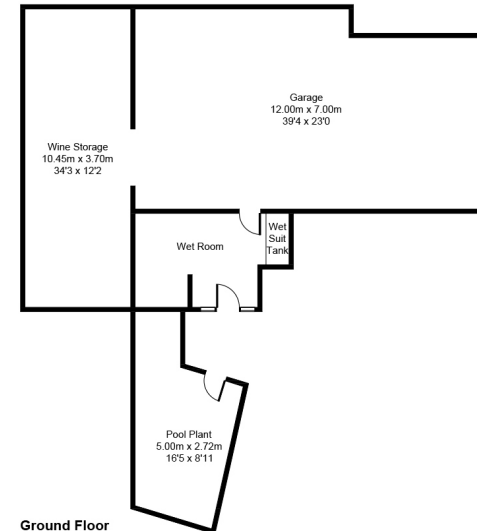
First Floor



Ground Floor



Basement / Cellar Floor

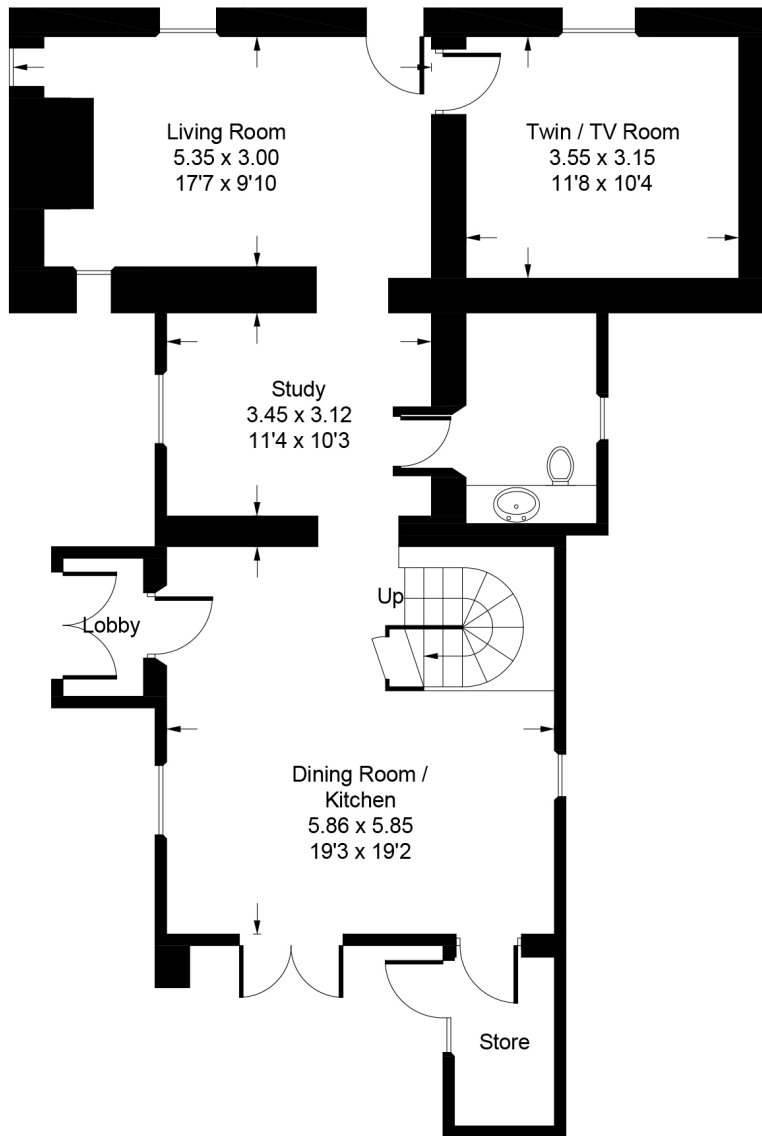


Ground Floor

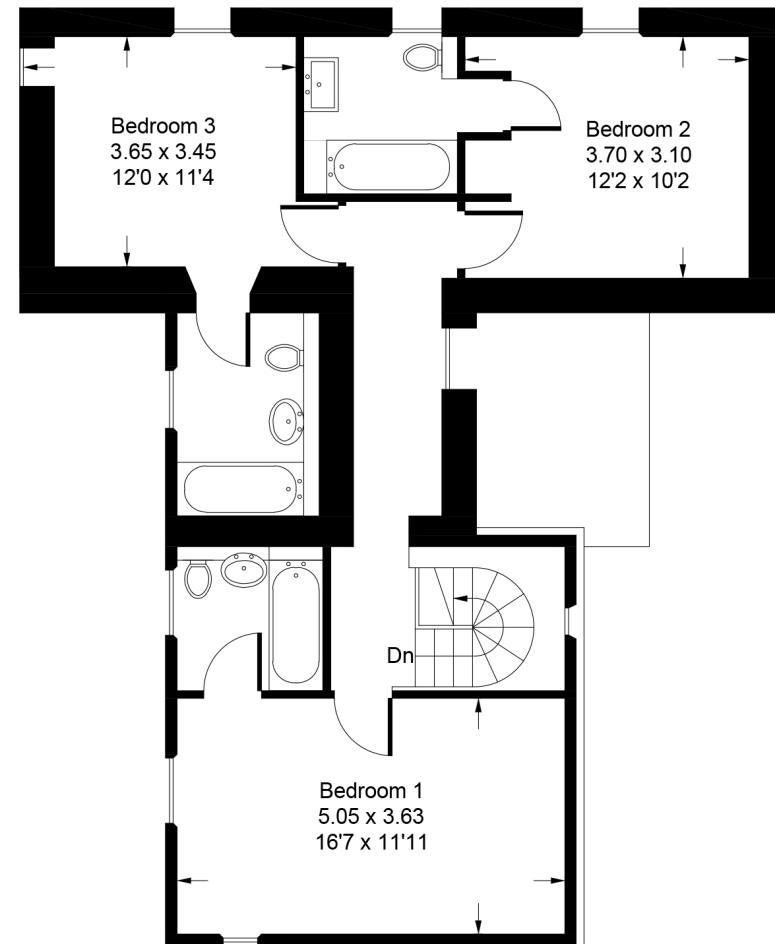
This plan is for layout guidance only. Not drawn to scale unless stated. Windows and door openings are approximate. Whilst every care is taken in the preparation of this plan, please check all dimensions, shapes and compass bearings before making any decisions reliant upon them. (ID961639)

Treverra

Approximate Gross Internal Area = 145.8 sq m / 1569 sq ft



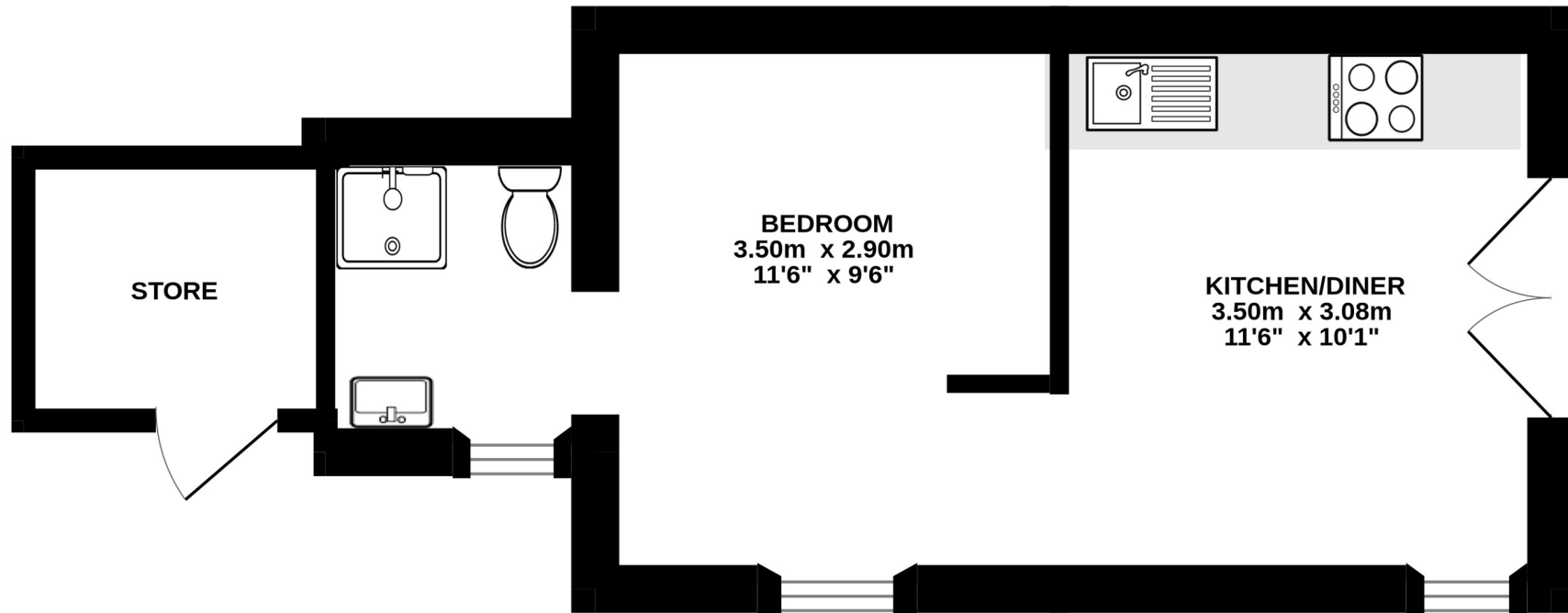
Ground Floor



First Floor

This plan is for layout guidance only. Not drawn to scale unless stated. Windows and door openings are approximate. Whilst every care is taken in the preparation of this plan, please check all dimensions, shapes and compass bearings before making any decisions reliant upon them. (ID1022811)

STUDIO
27.3 sq.m. (294 sq.ft.) approx.



TOTAL FLOOR AREA : 27.3 sq.m. (294 sq.ft.) approx.

Measurements are approximate. Not to scale. Illustrative purposes only
Made with Metropix ©2023